



Wind Power Operational and Market Report Week of Jan 13, 2008 to Jan 19, 2008

Thursday, January 31, 2008

1.0 Purpose

Around the world, interest in wind development as a source of renewable energy continues to grow. In Alberta, wind power is part of the diverse mix of generation sources that supplies the growing electricity demands of Albertans. As the amount of wind power on a system grows, so do the operational challenges.

Wind can start, stop or change at any moment. Today wind power is backed up by coal, gas, hydro generation facilities or the interconnections to BC and Saskatchewan using Alberta's competitive electricity markets.

The purpose of the weekly report is to provide industry with graphs and tables that illustrate aspects such as:

- Wind generation versus system load
- Regional diversity of wind generation
- Wind generation in the energy market
- Wind generation forecasts versus actual wind generation

The forecast information comes from the Wind Power Forecasting Pilot Project. The intent is to capture weekly wind power events and break them down from a forecasting perspective in order to educate AESO stakeholders on the capabilities of wind power forecasting. More information about this project can be found on our website at <http://www.aeso.ca/gridoperations/13825.html>.

The AESO anticipates that this report will continue to improve and any feedback is appreciated and feedback can be emailed to AESO stakeholder relations at stakeholder.relations@aeso.ca.

Special Note: There was an error in the pool price in section 3.0 in the weekly reports for 2 Dec to 8 Dec, 16 Dec to 22 Dec, 23 Dec to 29 Dec, and 30 Dec to 5 Jan. There was an error in the curtailment statistics in the weekly report for 16 Dec to 22 Dec. These errors have been corrected and these corrected weekly reports have been reposted to the website.

2.0 Wind Generation Statistics

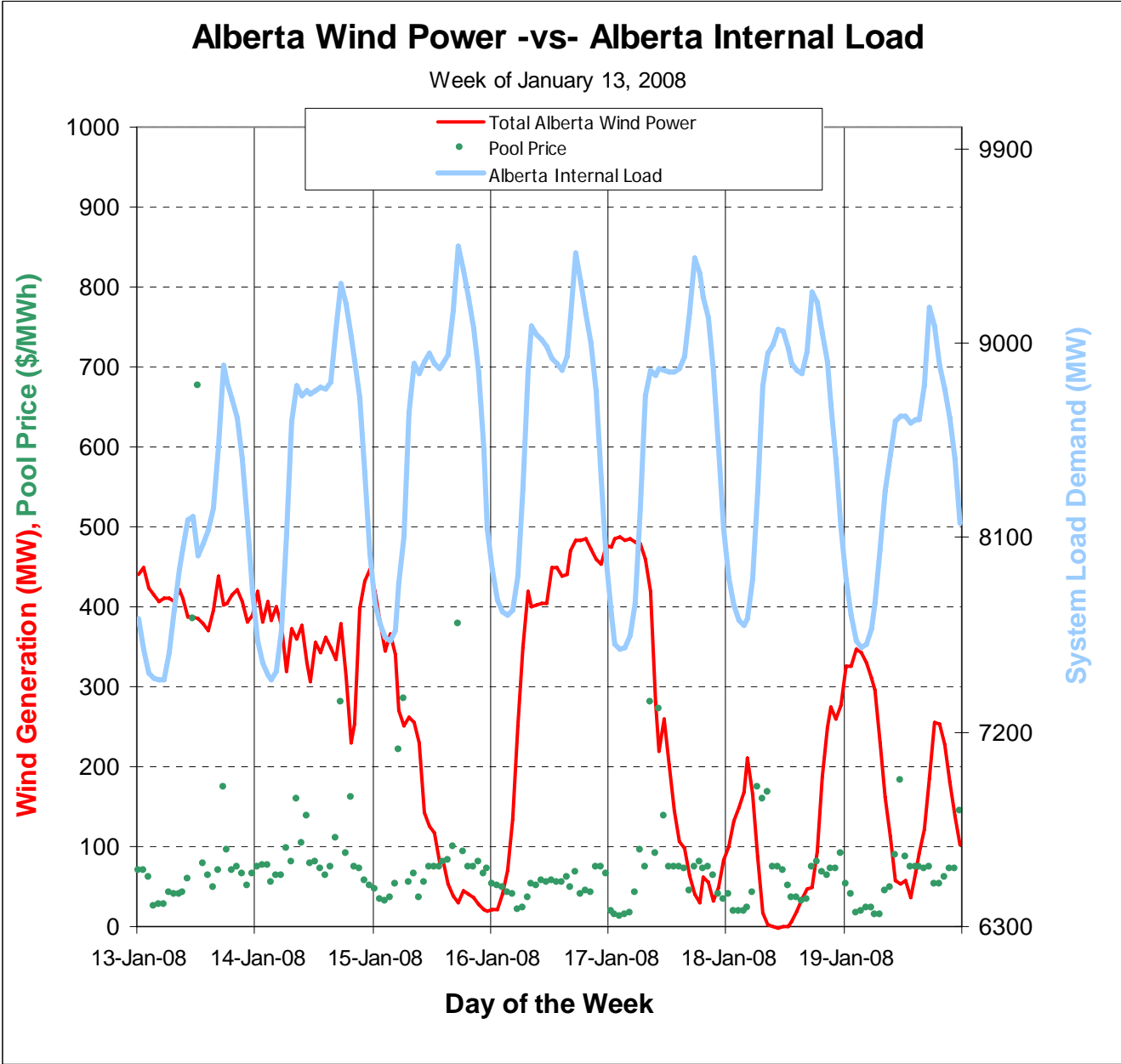
The purpose of this table is to provide daily production statistics as well as any wind power curtailment that occurred. The weekly average capacity factor¹ was 52.62%.

Daily Alberta Wind Generation Statistics										
497MW of Wind Power Currently Operational										
Date	Wind Generation (MWh/MW) Statistics								Curtailment Statistics	
	Average Off-Peak Wind Gen (MWh)	Off-Peak Capacity Factor	Average On-Peak Wind Gen (MWh)	On-Peak Capacity Factor	Average Daily Wind Gen (MWh)	Minimum Wind Generation	Maximum Wind Generation	Average Wind Gen During High Load Hour (MWh)	Number of Hours	Number of Affected Wind Power Facilities
13-Jan-08	418	84.07%	401	80.63%	406	338	476	407	1	1
14-Jan-08	391	78.71%	343	69.07%	359	171	471	346	0	0
15-Jan-08	299	60.14%	99	19.94%	166	17	443	36	0	0
16-Jan-08	171	34.38%	444	89.43%	353	20	490	483	0	0
17-Jan-08	432	86.92%	157	31.67%	249	21	491	44	0	0
18-Jan-08	161	32.42%	77	15.54%	105	0	314	66	0	0
19-Jan-08	297	59.80%	139	28.03%	192	21	358	220	0	0

¹ Capacity factor is determined by averaging the hourly capacity factors which are calculated as: Average Hourly Wind generation/Total installed capacity *100

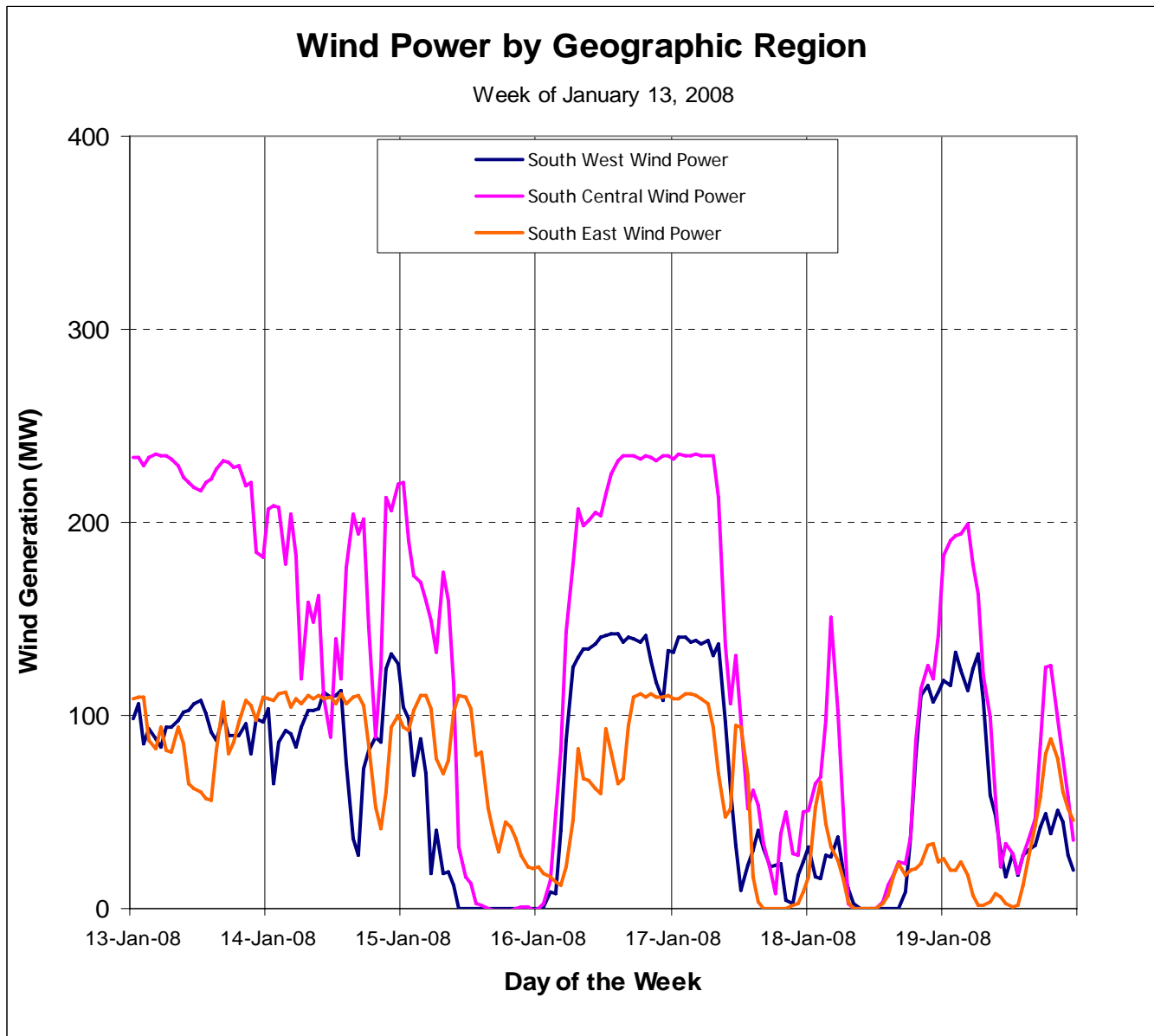
3.0 Wind Generation and System Load

The purpose of the graph is to illustrate how wind power varies with system load and the hourly pool price.



4.0 Wind Diversity in Alberta

The purpose of this graph is to illustrate how wind power varies in the different regions of Alberta.



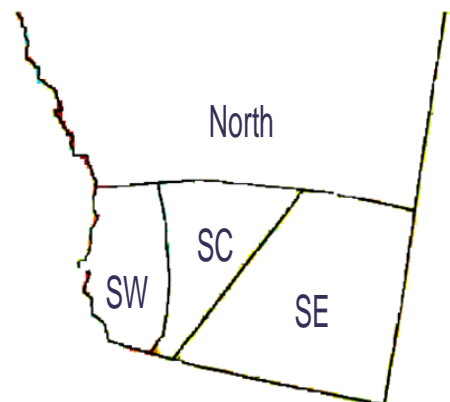
Wind Regions:

South West (SW) Total Installed = 212.3MWs

South Central (SC) Total Installed = 176.2 MWs

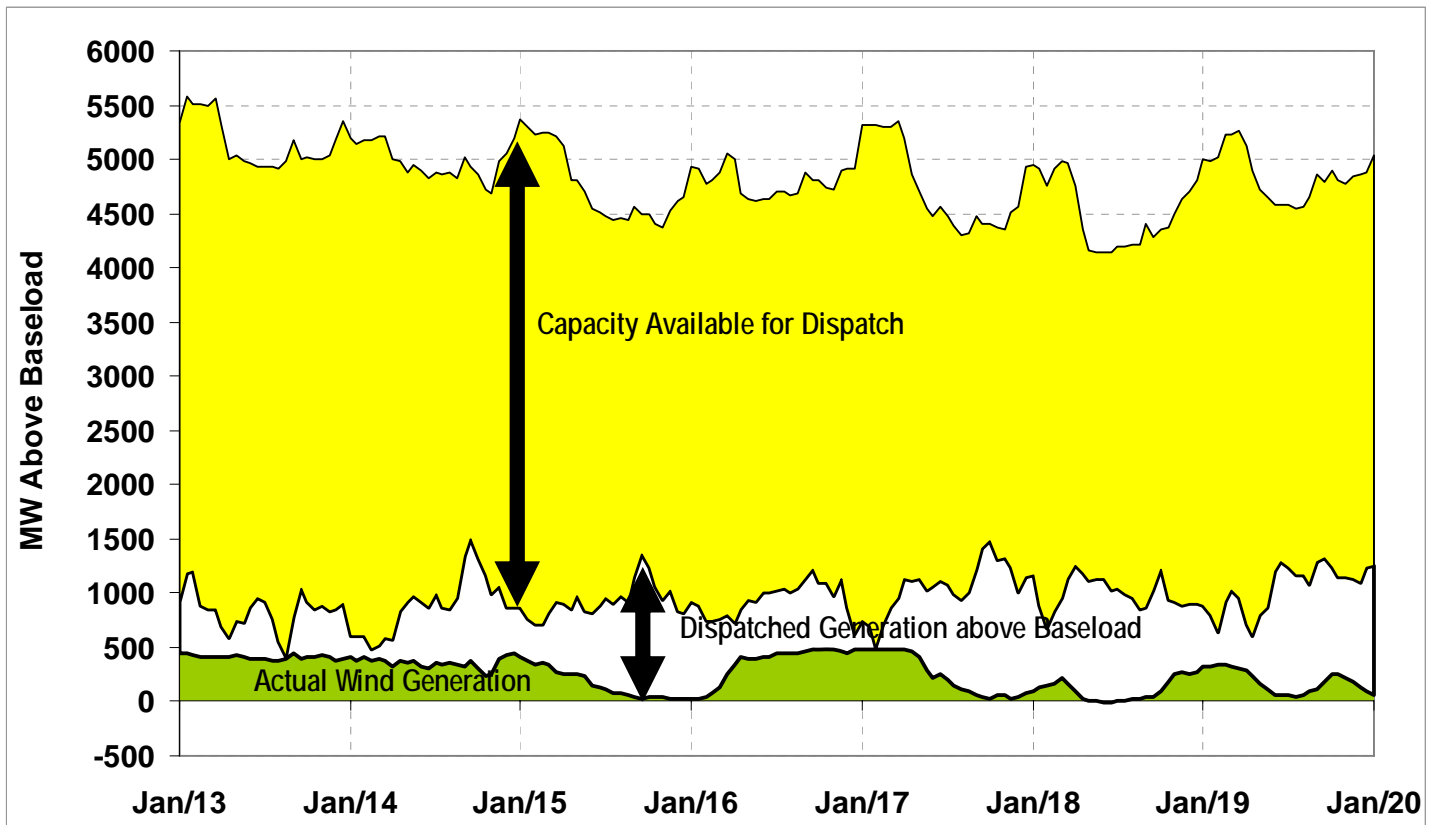
South East (SE) Total Installed = 110 MWs

There are currently no operational wind facilities in the North.



5.0 Generation Supply & Market Dispatch above Baseload Gen (\$0 Offer)

The Purpose of this graph is to demonstrate the variable flexibility that exists in the market place to accommodate wind.



- Based-load generation is the amount of generation from coal, gas or hydro that is either zero dollar offered, Transmission Must Run, small non-dispatchable or behind-the fence industrial generation. This can vary hourly and range between 4500 MW and 6000 MW throughout the year.
- **Note:** The Dispatched Generation above Baseload represents the head room before supply surplus conditions occur.
- **Capacity Available for Dispatch:** Includes unloaded capacity from regulating reserves as well as the amount of offered generation capacity that is not dispatched into the electricity markets.
- **Dispatched Generation above Baseload:** Includes generation produced from the regulating and contingency reserves as well as the amount of non-zero dollar generation dispatched from the energy market merit order.
- **Actual Wind Generation:** The measured amount of all wind generation in Alberta.

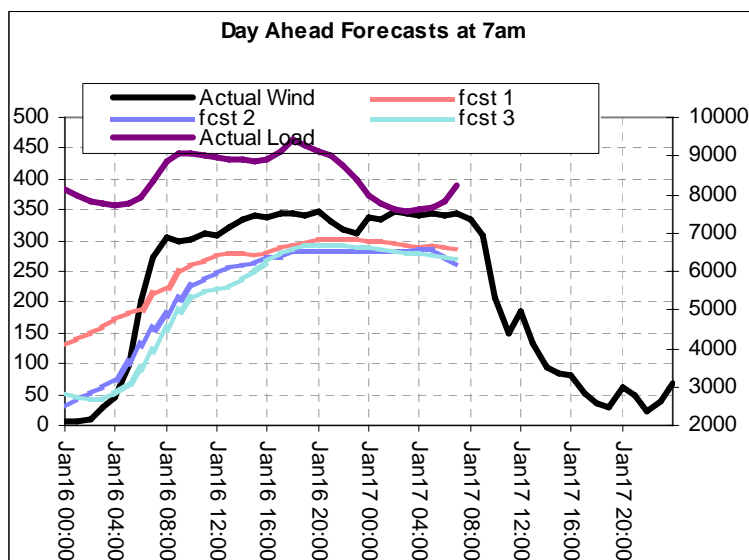
6.0 Wind Power Forecasting Pilot Project

The purpose of this section is to introduce stakeholders to wind power forecasts. The intent is to identify some of the weekly events, and break them down from a forecasting perspective.

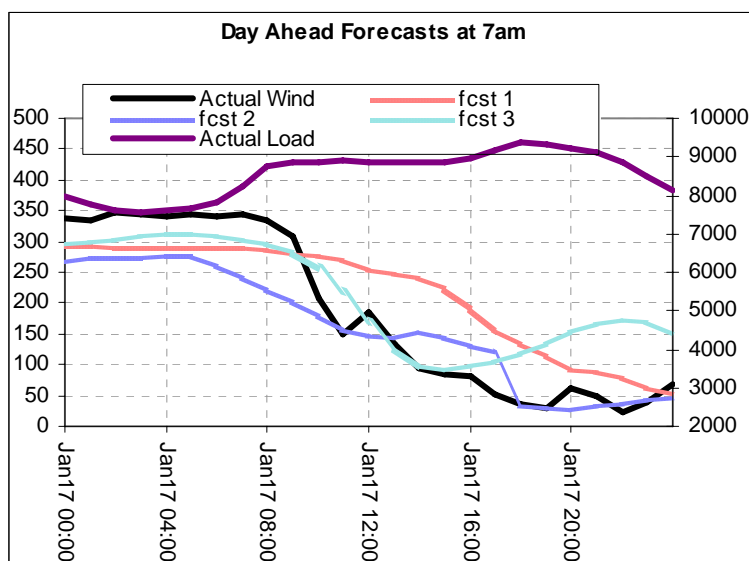
Note: the total capacity in the pilot is 350 MW and not the 497 MW currently connected to the Alberta system.

6.1 Event 1

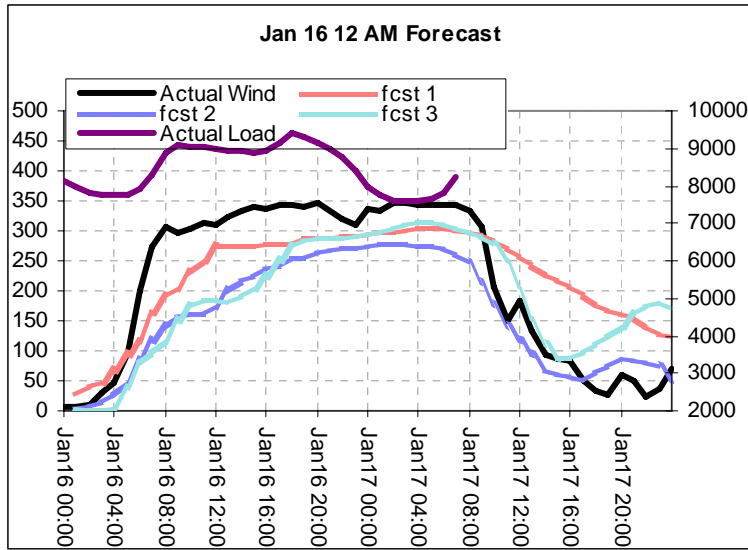
The event for this week was a ramp up in wind power on 16 Jan and a ramp down in wind power on 17 Jan.



These are the forecasts delivered at 7am on Jan 15 for the next 48 hours into Jan 16 and 17. All three forecasters see a rise in wind power. F2 and F3 capture the phase or timing of the ramp well.



These are the forecasts delivered at 7am on Jan 16 for Jan 17. All three forecasters predict that there will be a ramp down during the late morning of Jan 17.



These are the forecasts delivered at 12am on Jan 16 for the next 48 hours. All three capture the trend well. There is error in the magnitude and in some of the phase or timing.