

APPENDIX C - AESO PIP

Wheatland Wind Project Connection

PIP Summary

1.0 Introduction

The AESO's Participant Involvement Program (PIP) is designed to notify the parties notified in the transmission facility owner's (TFO's) PIP and any other parties that the AESO determines may have an interest in the needs identification document, including, but not limited to:

- i. occupants, landowners or residents;
- ii. local authorities, agencies and government which have responsibilities related to electric transmission line development;
- iii. First Nations and Métis; and
- iv. market participants

(collectively, Stakeholders).

The AESO's PIP has been conducted in accordance with the requirements of Section 6.2.1, NID19 and Appendix A2 of the current Alberta Utilities Commission Rule 007 (AUC Rule 007), effective April 2, 2018.

From June 2017 to November 2018, the AESO conducted a PIP to assist in preparing its *Wheatland Wind Project Connection Needs Identification Document* (NID). The AESO directed the TFO, in this case ATCO Electric Ltd. (ATCO), to assist the AESO in providing notification as part of the AESO's PIP.

2.0 Stakeholder Notification

The AESO developed a one-page AESO Need Overview document that notified Stakeholders of the following items:

- a description of the need for development;
- a description of the AESO's preferred option to respond to the system access service request;
- identification of the general area where facilities could be installed to implement the AESO's preferred option to respond to the system access service request;
- the AESO's contact information, including telephone, email and website, for further information; and
- the AESO's next steps, including the AESO's intention to apply to the Alberta Utilities Commission (Commission) for approval of the need.

A copy of the Need Overview was posted to the AESO website at <https://www.aeso.ca/grid/projects/wheatland-wind-project-connection/> on September 27, 2017 and a notice was published in the AESO Stakeholder Newsletter on September 28, 2017. Copies of the Need Overview posting and the AESO Stakeholder Newsletter notice have been included as Attachments 1 and 2, respectively. The Need Overview was also included with the

TFO's project-specific information packages that were distributed to Stakeholders, as further described below.

2.1 Stakeholders Notified in the ATCO's PIP

ATCO has advised the AESO that its PIP included notification within 800 m of the proposed transmission lines and proposed substation, as recommended by the Commission in Appendix A1 of AUC Rule 007 for a facility of this type.¹

ATCO notified a total of approximately 15 Stakeholders, of which 2 were classified as private or individual occupants, residents or landowners. The other 13 notified stakeholders, and the ATCO's rationale for their inclusion in the PIP, are listed in Table 1.

Table 1: Summary of Notified Authorities, Agencies, Government Bodies, Indigenous Groups, Industry and Stakeholders

Stakeholder	ATCO's Rationale for Inclusion in the PIP
Alberta Culture & Tourism – Referral Department	Provincial Requirement
Alberta Environment & Parks – Fish and Wildlife	Provincial Requirement
Alberta Transportation	Provincial Requirement
Canadian Natural Resources Limited	Land rights
Cenovus Energy Inc.	Land rights
Wheatland Wind Project L.P.	Land rights
Industry Canada	Federal Requirement
MLA for Strathmore Constituency – Brooks	AESO request
NAV CANADA	Federal Requirement
Rosebud Gas Co-op Ltd.	Land rights
Telus Communications Inc	Provincial Requirement
Transport Canada	Federal Requirement
Wheatland County	Municipal Requirement

Attachment 3 includes ATCO's project newsletter, which was included in ATCO's project-specific information packages that were distributed to the Stakeholders described above between June 27, 2017 and July 16, 2017. ATCO's project newsletter included the AESO's contact information, a description of the AESO's role, a reference to the AESO Need Overview, and an invitation to contact ATCO or the AESO for additional information.

2.2 Stakeholders Notified by the AESO

The AESO also notified 8 market participants that the AESO determined may have an interest in the NID. The AESO identified that, under certain system conditions, these market participants may be affected following the connection of the Facility and/or two other planned generating facilities. A Market Participant Notification Letter, which included the applicable Need Overview,

¹ ATCO has identified its facility application to be of the type: *Overhead transmission line and new substation development – rural or industrial setting.*

was sent to the notified market participants on September 26, 2018. The 8 notified market participants are as follows:

- Alberta Power (2000) Ltd.
- Balancing Pool
- Bull Creek Wind Power L.P.
- EDP Renewables SH Project L.P.
- Ghost Pine Windfarm L.P.
- Halkirk Wind Power L.P.
- Oldman 2 Wind Farm Limited
- Wheatland Wind Project L.P.

A generic version of the Market Participant Notification Letter was posted to the AESO website on September 26, 2018 at <https://www.aeso.ca/grid/projects/wheatland-wind-project-connection/>. A copy has been included as Attachment 4.

3.0 Filing Notification

Most recently, the AESO notified Stakeholders of its intention to submit the NID to the Commission by posting a Notification of NID Filing to the AESO website at <https://www.aeso.ca/grid/projects/wheatland-wind-project-connection/> and a publishing notice in the AESO Stakeholder Newsletter on October 11, 2018. Copies of the Notification of NID Filing posting and the AESO Stakeholder Newsletter notice have been included as Attachments 5 and 6, respectively.

4.0 Responding to Questions and Concerns

To ensure that Stakeholders had the opportunity to provide feedback, the AESO provided Stakeholders with AESO contact information, including a dedicated, toll-free telephone line (1-888-866-2959) and a dedicated email address (stakeholder.relations@aeso.ca). The AESO Need Overview included this contact information, along with the AESO's mailing address (2500, 330 5th Ave. SW, Calgary) and website address (www.aeso.ca), and a privacy statement that described how the AESO is committed to protecting Stakeholders' privacy.

As directed by the AESO, ATCO was prepared to direct any Stakeholder questions addressed to the AESO, or questions regarding the AESO Need Overview, to the AESO.

5.0 Concerns and Objections Raised

ATCO has advised that Stakeholders have not identified any concerns or objections regarding the AESO's preferred option to respond to the system access service request or the need for development. The AESO has not received any indication of concerns or objections from any party about the AESO's preferred option to respond to the system access service request or the need for development.

6.0 List of Attachments

- Attachment 1 – AESO Need Overview (June 2017)
- Attachment 2 – AESO Stakeholder Newsletter Need Overview Notice (September 28, 2017)
- Attachment 3 – ATCO's Project Newsletter – *Wheatland Transmission Project* (June 2017)
- Attachment 4 – AESO Market Participant Letter (September 26, 2018)
- Attachment 5 – AESO Notification of NID Filing (October 2018)
- Attachment 6 – AESO Stakeholder Newsletter NID Filing Notice (October 11, 2018)

Attachment 1 – AESO Need Overview (June 2017)

Need for the Wheatland Wind Project Connection in the Dorothy area



FAST FACT

Alberta's electric transmission system comprises the towers, wires and related equipment that are a part of moving electricity from where it is generated to where it is used.

Wheatland Wind Project Ltd. (Wheatland) has applied to the Alberta Electric System Operator (AESO) for transmission system access to connect its proposed Wheatland Wind Project (Facility) in the Dorothy area. Wheatland's request can be met by the following solution:

> PROPOSED SOLUTION

- Add a substation (Parker 2072S) with three 144 kilovolt (kV) circuit breakers.
- Add two 144 kV transmission lines to connect the proposed Parker 2072S substation to the existing 144 kV transmission line 7L85.
- Add a 144 kV transmission line to connect the Facility to the proposed Parker 2072S substation.
- Add or modify associated equipment as required for the above transmission developments.

> NEXT STEPS

- In late 2017, the AESO intends to submit a needs identification document (NID) to the Alberta Utilities Commission (AUC) for approval.
- Once submitted, the NID will be posted on the AESO's website at www.aeso.ca/grid/projects/

The following organizations have key roles and responsibilities in providing access to the transmission system:

> THE AESO:

- Must plan the transmission system and enable access to it for generators and other qualified customers.
- Is regulated by the AUC and must apply to the AUC for approval of its NID.

> ATCO ELECTRIC LTD.:

- Is the transmission facility owner in the Dorothy area
- Is responsible for detailed siting and routing, constructing, operating and maintaining the associated transmission facilities
- Is regulated by the AUC and must apply to the AUC for approval of its transmission facilities applications

> CONTACT US

We appreciate your views, both on the need for transmission system development and proposed transmission plans. If you have any questions or comments, please contact us directly.

Alberta Electric System Operator

Jennifer Vollmer

AESO Stakeholder Relations

stakeholder.relations@aeso.ca

1-888-866-2959

2500, 330-5th Avenue SW

Calgary, AB T2P 0L4

Phone: 403-539-2450

Fax: 403-539-2949

www.aeso.ca | [@theaeso](https://twitter.com/theaeso)

> WHO IS THE AESO?

The Alberta Electric System Operator (AESO) plans and operates Alberta's electricity grid and wholesale electricity market safely, reliably and in the public interest of all Albertans. We are a not-for-profit organization with no financial interest or investment of any kind in the power industry.

Attachment 2 – AESO Stakeholder Newsletter Need Overview Notice (September 28, 2017)

September 28, 2017

AESO Stakeholder Newsletter

> GRID

Wheatland Wind Project Connection – Need for Transmission

Development in the Dorothy area

Wheatland Wind Project LP, by its general partner Wheatland Wind Project Ltd. (Wheatland), has applied to the Alberta Electric System Operator (AESO) for transmission system access to connect its proposed Wheatland Wind Project (Facility) in the Dorothy area. Wheatland's request can be met by the following solution:

- Add a substation (Parker 2072S) with three 144 kilovolt (kV) circuit breakers
- Add two 144 kV transmission lines to connect the proposed Parker 2072S substation to the existing 144 kV transmission line 7L85
- Add a 144 kV transmission line to connect the Facility to the proposed Parker 2072S substation
- Add or modify associated equipment as required for the above transmission developments

The AESO has posted a Need Overview for this project on its website. Please [click here](#) to view the document or visit the AESO website at www.aeso.ca and follow the path Grid > Projects > Wheatland Wind Project Connection

Attachment 3 – ATCO’s Project Newsletter – *Wheatland Transmission Project* (June 2017)

CONTACT INFORMATION

Your comments and concerns are important to us. Please contact us if you would like to learn more about this project or if you would like to share information with us.

Call us toll free at: **1 855 420 5775** or contact the project planner directly:

Deb Castor
Right-of-Way Planning
ATCO
10035-105 Street Edmonton AB T5J 2V6

Phone: 780 420 4151
Email: consultation@ATCOelectric.com
Website: ATCOelectric.com
Fax: 780 420 5030

Alberta Electric System Operator (AESO)
Phone: 1 888 866 2959
Email: stakeholder.relations@aeso.ca

Alberta Utilities Commission (AUC)
Phone: 780 427 4903
(For toll-free, dial 310 0000 first)
Email: consumer-relations@auc.ab.ca



Approval Process

Alberta’s electrical system is regulated by the AUC, an independent agency of the province that ensures the fair and responsible delivery of utility services. Before ATCO can begin construction on a project, the AUC must approve the facilities application, which includes details such as location of electric transmission facilities and routes. For more information about how you can participate in the AUC approval process, please refer to the enclosed AUC brochure, *Public Involvement in a Proposed Utility Development*.

Next Steps

The consultation process for this project is ongoing. Please let us know if you have any questions, concerns or suggestions regarding this project. You can provide feedback and share other information using the enclosed reply form and postage paid envelope, by contacting us (toll free) at **1 855 420 5775**, or by emailing us at consultation@ATCOelectric.com.



ATCO SHAPE the conversation

June 2017



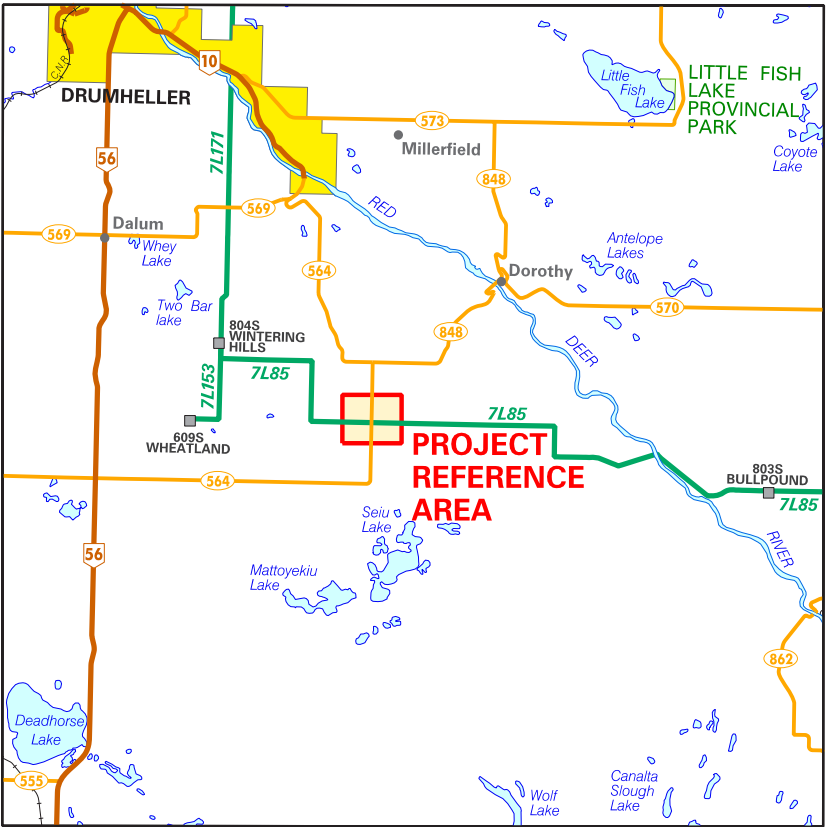
PROJECT NEWSLETTER

WHEATLAND TRANSMISSION PROJECT

This newsletter provides you with information about electric transmission facilities being planned in your area. This package provides important project information and outlines our public consultation process. We invite any comments, questions or concerns you may have.

The proposed Wheatland Transmission Project will be located approximately 10 kilometres (km) southwest of Dorothy, and is required to connect new customer wind generation facilities to the electrical grid. If approved, the project will include the construction of approximately 30 metres (m) of single-circuit 144 kilovolt (kV) transmission line (to be called 7L218), a new Parker switching station (to be called 2072S) and the alteration of the existing transmission line 7L85. Please refer to the technical details and the planned site layout and route diagram for further details.

ATCO is seeking your input on how this project may affect you. If you are in the direct vicinity of the planned facilities, ATCO will contact you in the coming weeks.



Project Need

The Alberta Electric System Operator (AESO) is an independent, not-for profit organization responsible for the safe, reliable and economic planning and operation of the provincial electric transmission grid. For more information about why this project is needed, please refer to the AESO’s Need Overview included with this package or visit aeso.ca.

If you have any questions or concerns about the need for this project, you may contact the AESO directly. You can also make your concerns known to an ATCO representative who will collect your personal information for the purpose of addressing your questions and/or concerns to the AESO. This process may include disclosure of your personal information to the AESO.

Included in this package

- Technical details of project
- Planned site layout and route diagram
- AUC brochure: *Public Involvement in a Proposed Utility Development*
- AESO Need Overview
- Reply form and postage paid envelope

LOCAL BENEFITS

Upgrading the transmission system in your area will:

- Improve access to safe, secure and reliable power
- Allow future businesses to connect to Alberta's electric system
- Encourage investment in our province

If you are a local business, and would like to be considered for the ATCO approved vendors list, please contact us toll free at 1-800-668-2248.



and answer any questions you may have. These conversations help us determine the best route option for new transmission line developments.

In developing route options, ATCO must consider a range of route constraints and barriers including proximity to residences. We undertake extensive studies to understand the potential impacts on wildlife, wetlands and other sensitive areas.

In addition to the in-person and telephone consultations that ATCO will continue to undertake, we invite anyone who is interested in this project to:

- provide feedback and share other information using the enclosed reply form and postage paid envelope, and
- be a part of the conversation. If you have any questions, concerns or other information regarding this project, we want to hear from you.

If you have an interest in lands located on or beside the selected route or substation site, you will be contacted by an ATCO representative to further discuss the project and

to address any questions or concerns you may have. When consultations have been completed, ATCO will submit a facilities application to the Alberta Utilities Commission (AUC) to obtain approval for the construction and operation of the planned facilities.

Transmission Routes

Prior to consultation with landholders, ATCO develops early route concepts. In selecting early route concepts, ATCO considers numerous constraints and barriers including:

- Proximity to residences
- Environmentally sensitive areas
- Wetlands
- Existing infrastructure (i.e. other transmission lines, roads, highways, pipelines, telecommunication towers)
- Planned developments
- Agriculture operations
- Visual factors
- Construction & land acquisition costs
- Quarter and section lines
- Other special considerations (i.e. access roads)

Selected Route Option

ATCO completed early landowner engagement with parties who would likely be affected by the early route concepts. As a result of the early engagement program, one route option has been identified as the selected route option for the project (see *enclosed map*). Parties on or beside the selected route will be contacted by an ATCO representative for additional consultation in the weeks ahead.

Access Trails and Temporary Workspace

Access trails may be required in areas where terrain conditions or the presence of wetlands make driving along the right-of-way impractical. In some situations, access trails will be temporary. Permanent access trails may be needed for ongoing maintenance in some areas. If required, temporary and permanent access trails will be approximately six to 15 metres (m) wide.

In addition, temporary workspace may be required along the edge of the right-of-way and in other selected locations. If needed, this temporary workspace will be used to install the structures and string the transmission line. At corners or locations where the line bends, additional areas may be required to string the transmission line

and accommodate the movement of equipment. This temporary workspace may extend beyond the right-of-way by up to 125 m by 18 m. The exact locations of all temporary workspaces and structures have yet to be determined, and dimensions may vary with final plans.

Landowners will be compensated for temporary workspace located outside of the right-of-way boundaries. Arrangements for temporary workspace will be discussed and negotiated with landowners individually.

The Process

Our research indicates that you are in the vicinity of the planned route concept for the Wheatland Transmission Project. In the coming weeks, ATCO will be contacting you to discuss the project.

Consultation with landholders routinely leads to improvements on our projects. We have adjusted routes, developed new route options and rejected other routes because of conversations with landholders. Your feedback and input will help determine the best possible routes.

We would like to meet with you to gather information about the area

The Right-of-Way

The term right-of-way refers to the area a transmission line uses including areas on either side of the line. Rights-of-way must have a minimum width to ensure safety and ongoing access for maintenance.

For safety reasons, some general restrictions on the use of the land in the direct vicinity of the transmission line may apply. These include setbacks for development.

Details including width and position of the right-of-way will depend on the type and size of the required structure, existing land use, surrounding features and other factors.

The right-of-way will follow property boundaries if feasible and, in some situations, will follow existing features like a road, pipeline or another power line.

The typical width of the right-of-way for this project is 32 m.

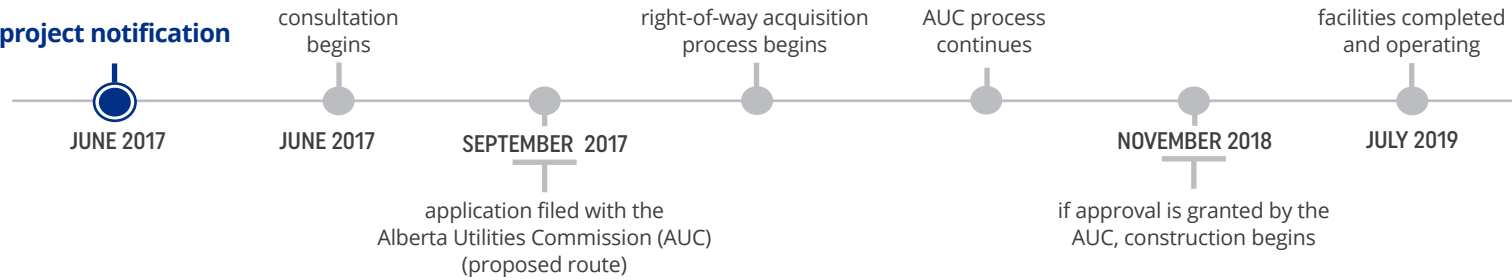
Once a proposed route has been submitted to the AUC, ATCO begins coordinating agreements with landholders to acquire rights-of-way. Once a right-of-way is constructed, landholders continue to use the right-of-way subject to the terms of agreements made between the landholder and ATCO.

THE SCHEDULE



PUBLIC CONSULTATION

This is a continuous process that occurs throughout the life of the project.

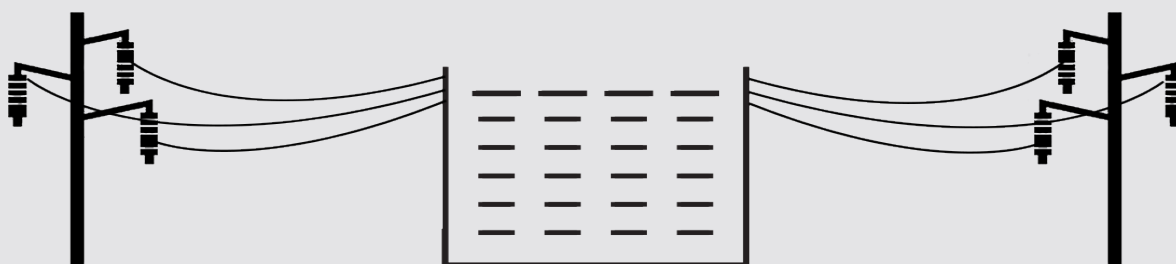


The Technical Details

June 2017

WHEATLAND TRANSMISSION PROJECT

The technical details of facilities associated with the Wheatland Transmission Project are described in this fact sheet. Designs may vary as plans are finalized.



Modifications to the existing 144 kilovolt (kV) Transmission Line 7L85

The project will require alterations to the existing single-circuit 144 kV transmission line 7L85.

New Parker 2072S Substation

The project will require a new substation, located approximately 10 km southwest of Dorothy, AB in SE 15-26-18 W4M.

New 144 kV Transmission Line 7L218

Approximately 30 m of new planned single-circuit 144 kV transmission line (to be called 7L218) will connect Wheatland Wind Project LP collector station to the planned Parker substation.

THE DETAILS

If approved, the modification will include the construction of two short segments of new transmission line between the existing transmission line 7L85 and the planned Parker substation.

Additionally, the transmission line between the existing Wintering Hills 804S substation and the planned Parker substation will be redesignated as 7L203, and the transmission line between the planned Parker substation and the existing Anderson 801S substation will remain as 7L85.

Following construction, a short segment of 7L85 will no longer be required, so it will be decommissioned and removed.

THE DETAILS

If approved, the work will include the installation of the following new equipment (please refer to the back of this fact sheet for definitions):

- Three 144 kV circuit breakers
- Associated switches, equipment, and buildings
- One 14.9 m self-supporting telecommunication tower

The equipment described above will be installed within the planned Parker substation site (please see the enclosed site plan).

THE DETAILS

If approved, the new 7L218 transmission line will consist of:

- Three conductor wires
- An A-Frame structure

Wheatland Wind Project LP collector station and the planned Parker substation will share a common fence line along the north edge of the planned Parker substation.

What It Will Look Like

If approved by the Alberta Utilities Commission (AUC), the new 144 kV transmission line segments will be built on wooden structures.

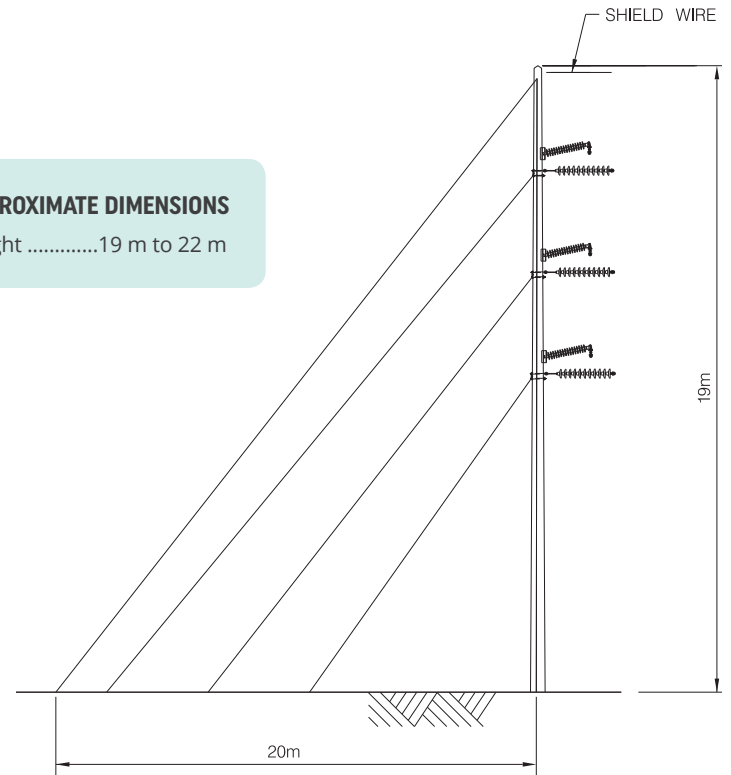
The new structures will be single-circuit. This means they will have three sets of conductor wires strung across them, plus one overhead shield wire at the top of the structure.

Non-typical structures may be required where the line ends, bends, goes around corners or avoids obstacles. In all cases, minimum clearance will meet or exceed provincial safety regulations.

Note: Details may change as the project develops and designs are finalized.

APPROXIMATE DIMENSIONS

Height19 m to 22 m



Typical slack span structure

Definitions

Circuit: A circuit is a group of wires electricity flows through. ATCO's transmission lines can be single or double circuit. A single-circuit line has three wires and a double-circuit line has six. A transmission line may also have one or two shield wires on the top of the structures to protect the line from lightning.

Circuit breaker: A circuit breaker is an automatic switch that is designed to protect an electrical circuit from overloading by shutting off the flow of electricity.

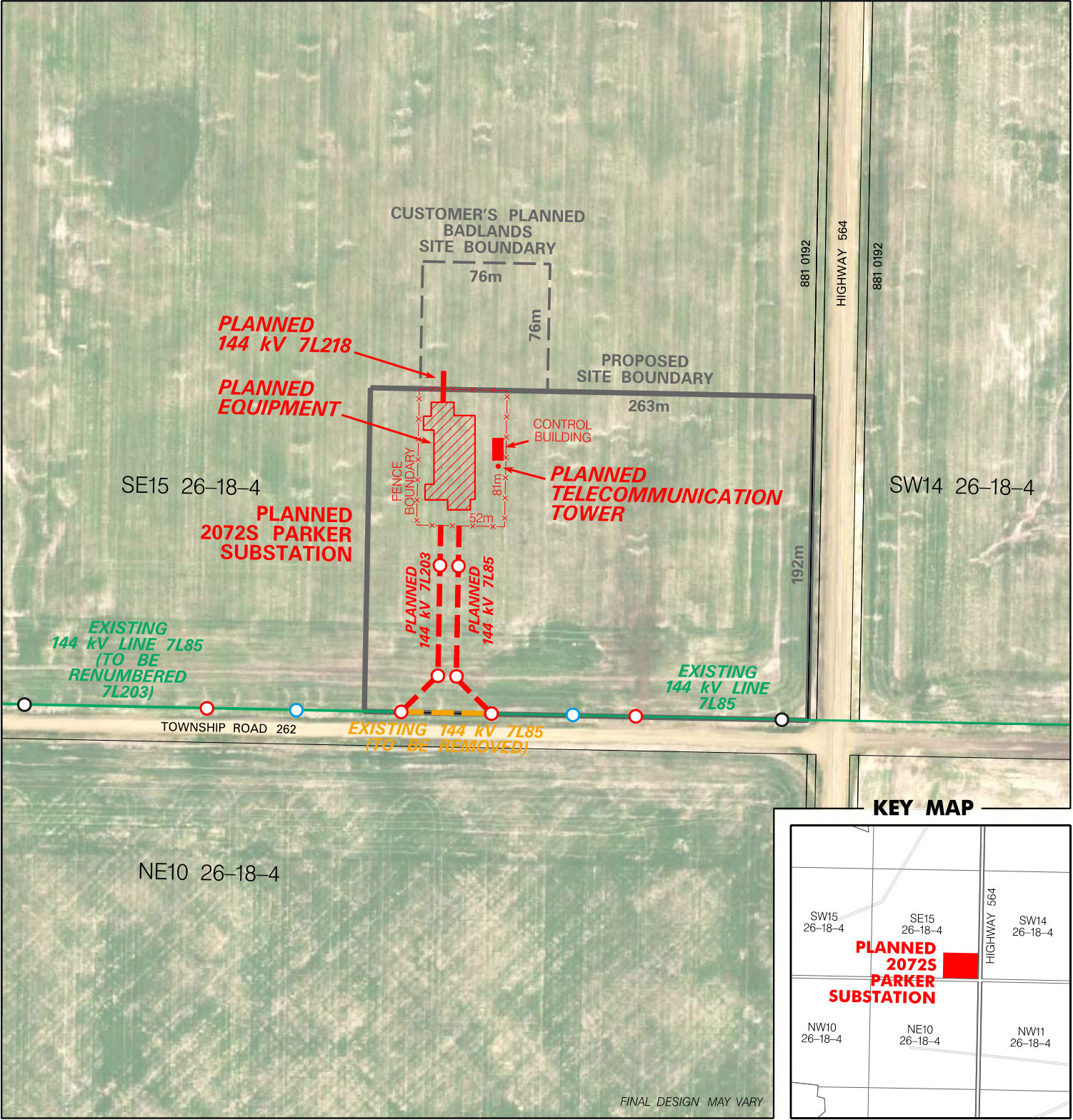
Consultation: A consultation is a meeting where advice, information and views are exchanged.

Kilovolt (kV): A kilovolt is equal to one thousand volts. This unit of measurement is most commonly used when describing transmission and distribution lines.

Distribution and transmission lines in Alberta carry between 4-kV (4,000 volts) and 500-kV (500,000 volts).

Right-of-way: A right-of-way is the use of a strip of land acquired for the construction and operation of a transmission line. The term right-of-way is also used to refer to the physical space a transmission line encompasses including areas on either side of the line.

Termination: A termination is the point where a power line ends and connects to a substation.



LEGEND

- Planned Transmission Structure
- Existing Transmission Structure To Be Removed
- Existing Transmission Structure Unaltered
- Planned 144 kV Transmission Line
- 144 kV Transmission Line To Be Removed
- Existing 144 kV Transmission Line



Wheatland Transmission Project

2072S PARKER SUBSTATION
PLANNED SITE LAYOUT /
ROUTE MOSAIC

Attachment 4 – AESO's Market Participant Letter (September 26, 2018)

September 26, 2018

[Market Participant]

Attention: **[Market Participant]**

Dear **[Market Participant]**

Re: **Planned Generating Facility Connections in the AESO's Central Planning Region**

The Alberta Electric System Operator (AESO) would like to advise you that the proponents of two planned generating facilities have each applied for transmission system access to connect their respective planned generating facilities to the Alberta interconnected electric system (AIES) in the AESO's Central Planning Region.

Planning for the connection of these facilities is undertaken by the AESO as part of the AESO's Connection Process. The planned facilities are as follows:

- the Wheatland Wind Project; and
- the Paintearth Wind Project.

In late 2018, the AESO plans to file a Needs Identification Document (NID) application for the connection of the Wheatland Wind Project. The AESO has produced a Need Overview document of the Wheatland Wind Project connection that describes the AESO's proposed transmission development to connect this planned facility to the AIES. A copy of the Need Overview document is attached for your information.

The Paintearth Wind Connection Project NID application was filed by the AESO with the Alberta Utilities Commission (AUC) on December 15, 2017 and is currently being considered by the AUC in Proceeding 23206.

The purpose of this letter is to advise you that the AESO has identified that, under some potential system conditions, the operation of the **[Market Participant Facility]** may be affected following the connection of one or more of the above-noted planned generating facilities.¹

Connection Assessment Findings

Engineering connection assessments were carried out by the AESO in order to assess the transmission system performance following the connection of the planned facilities. The connection assessments identified the potential for system performance issues, under some future system conditions, following the connection of one or more of the planned facilities.

¹ The studies were performed assuming the following Rate STS, *Supply Transmission Service*, contract capacities: the Wheatland Wind Project, Rate STS of 120 MW; and the Paintearth Wind Project, Rate STS of 150 MW.

Transmission Constraint Management

To mitigate these potential system performance issues existing and planned remedial action schemes (RASs) may be modified. In addition, new RASs may be required.

The AESO may also make use of real-time operational measures to mitigate these potential system performance issues, including in accordance with Section 302.1 of the ISO rules, *Real Time Transmission Constraint Management* (TCM Rule). When applied, the TCM Rule could result in the AESO issuing directives for curtailment to source assets that are effective in managing a constraint.

The connection assessments have identified source assets, including the **[Market Participant Facility]**, that are effective in mitigating the potential transmission constraints.

AESO Long-term Planning

At this time, the actual impacts of these projects depend on the actual energization timing of the planned generation facilities. The AESO will ensure plans are in place when impacts of these facilities become certain. As mentioned in the AESO's *Transmission Capability Assessment for Renewables Integration*,² the AESO expects to be able to connect approximately 130 MW in the Central East area. This capability report states that this could be achieved through use of RAS, which is consistent with the findings of the engineering connection assessments.

The Need for a Section 15(2) Application

If the AESO anticipates that congestion under system normal (Category A) conditions will arise on the transmission system, then the AESO is required to file and obtain approval from the AUC for an "exception" under Section 15(2) of the *Transmission Regulation*. The AESO will notify market participants if and when the AESO determines it is necessary to apply to the AUC for approval of such an exception, and will address the frequency, magnitude and duration of any anticipated congestion at that time.

For Further Information

The engineering connection assessment will be included in the AESO's Wheatland Wind Project Connection NID application. Following submission to the AUC of the NID application, the NID application will be posted on the AESO website at: <https://www.aeso.ca/grid/projects/>

If you have any questions or concerns, please contact the AESO at 1-888-866-2959 or stakeholder.relations@aesoc.ca

Yours truly,

"Electronically signed by"

Maz Mazadi, PhD, P.Eng., SMIEEE
Manager, Project and System Access Studies

Attachments:

AESO Need Overview: *Need for the Wheatland Wind Project Connection in the Dorothy area*

² Available at: <https://www.aeso.ca/assets/Uploads/Transmission-Capability-Assessment-for-Renewables-Integration-Final.pdf>

Need for the Wheatland Wind Project Connection in the Dorothy area



FAST FACT

Alberta's electric transmission system comprises the towers, wires and related equipment that are a part of moving electricity from where it is generated to where it is used.

Wheatland Wind Project Ltd. (Wheatland) has applied to the Alberta Electric System Operator (AESO) for transmission system access to connect its proposed Wheatland Wind Project (Facility) in the Dorothy area. Wheatland's request can be met by the following solution:

> PROPOSED SOLUTION

- Add a substation (Parker 2072S) with three 144 kilovolt (kV) circuit breakers.
- Add two 144 kV transmission lines to connect the proposed Parker 2072S substation to the existing 144 kV transmission line 7L85.
- Add a 144 kV transmission line to connect the Facility to the proposed Parker 2072S substation.
- Add or modify associated equipment as required for the above transmission developments.

> NEXT STEPS

- In late 2017, the AESO intends to submit a needs identification document (NID) to the Alberta Utilities Commission (AUC) for approval.
- Once submitted, the NID will be posted on the AESO's website at www.aeso.ca/grid/projects/

The following organizations have key roles and responsibilities in providing access to the transmission system:

> THE AESO:

- Must plan the transmission system and enable access to it for generators and other qualified customers.
- Is regulated by the AUC and must apply to the AUC for approval of its NID.

> ATCO ELECTRIC LTD.:

- Is the transmission facility owner in the Dorothy area
- Is responsible for detailed siting and routing, constructing, operating and maintaining the associated transmission facilities
- Is regulated by the AUC and must apply to the AUC for approval of its transmission facilities applications

> CONTACT US

We appreciate your views, both on the need for transmission system development and proposed transmission plans. If you have any questions or comments, please contact us directly.

Alberta Electric System Operator

Jennifer Vollmer

AESO Stakeholder Relations

stakeholder.relations@aeso.ca

1-888-866-2959

2500, 330-5th Avenue SW

Calgary, AB T2P 0L4

Phone: 403-539-2450

Fax: 403-539-2949

www.aeso.ca | [@theaeso](https://twitter.com/theaeso)

> WHO IS THE AESO?

The Alberta Electric System Operator (AESO) plans and operates Alberta's electricity grid and wholesale electricity market safely, reliably and in the public interest of all Albertans. We are a not-for-profit organization with no financial interest or investment of any kind in the power industry.

Attachment 5 – AESO Notification of NID Filing (October 2018)

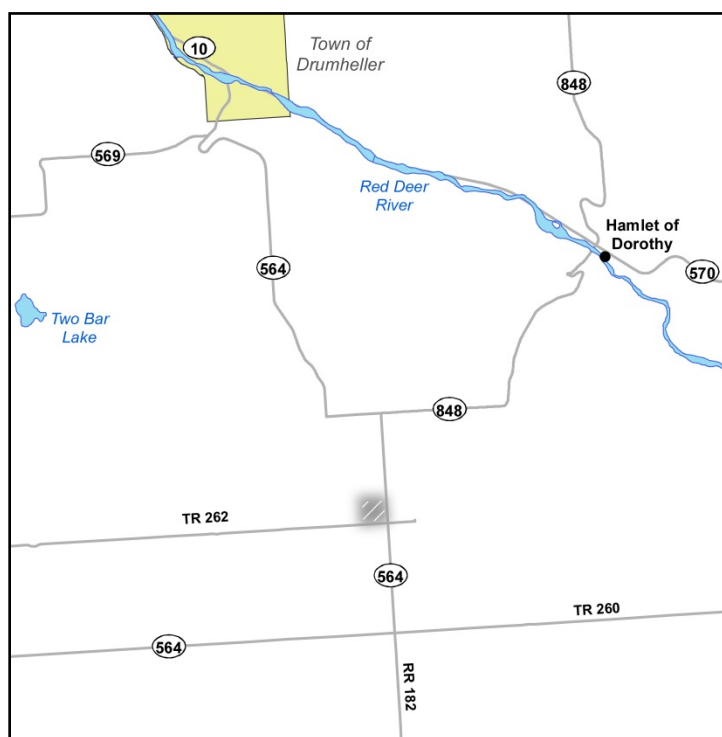
Notification of Needs Identification Document Filing

Addressing the Need for the Wheatland Wind Project Connection in the Dorothy Area

The Alberta Electric System Operator (AESO) advises you that it intends to file a Needs Identification Document (NID) for the Wheatland Wind Project Connection with the Alberta Utilities Commission (AUC) on or after October 26, 2018.

Wheatland Wind Project L.P., by its general partner Wheatland Wind Project Ltd. (Wheatland) has applied to the AESO for transmission system access to connect its approved Wheatland Wind Project (Facility) in the Dorothy area. Wheatland's request can be met by the following solution:

- Add a substation (Parker 2072S) with three 144 kilovolt (kV) circuit breakers.
- Add two 144 kV transmission lines to connect the proposed Parker 2072S substation to the existing 144 kV transmission line 7L85.
- Add a 144 kV transmission line to connect the Facility to the proposed Parker 2072S substation.
- Add or modify associated equipment as required for the above transmission developments.



The shaded area on the map indicates the approximate location of the proposed transmission developments, including the Parker 2072S substation and the 144 kV transmission line. The specific transmission facilities may extend beyond the shaded area shown.

ATCO Electric Ltd (ATCO) is the transmission facility owner (TFO) in the Dorothy area. In June 2017, the AESO and the TFO began presenting this need to stakeholders, including residents, and occupants. The AESO will apply to the AUC for approval of the need for this transmission development. Once filed with the AUC, the NID will be posted on the AESO website at <https://www.aeso.ca/grid/projects/wheatland-wind-project-connection/>

In a separate application, called a Facility Application, the TFO will provide more details about the specific facilities associated with the AESO's proposed transmission development, and will request AUC approval to construct and operate these facilities.

For more information, please visit our website, www.aeso.ca or contact us at 1-888-866-2959 or stakeholder.relations@aeso.ca

Attachment 6 – AESO Stakeholder Newsletter NID Filing Notice (October 11, 2018)

October 11, 2018

AESO Stakeholder Newsletter

> GRID

Wheatland Wind Project Connection – Notice of NID Filing

Wheatland Wind Project L.P., by its general partner Wheatland Wind Project Ltd. (Wheatland) has applied to the Alberta Electric System Operator (AESO) for transmission system access to connect its approved Wheatland Wind Project (Facility) in the Dorothy area. Wheatland's request can be met by the following solution:

- Add a substation (Parker 2072S) with three 144 kilovolt (kV) circuit breakers
- Add two 144 kV transmission lines to connect the proposed Parker 2072S substation to the existing 144 kV transmission line 7L85
- Add a 144 kV transmission line to connect the Facility to the proposed Parker 2072S substation
- Add or modify associated equipment as required for the above transmission developments

The AESO intends to file the Wheatland Wind Project Connection Needs Identification Document (NID) application with the Alberta Utilities Commission (AUC) on or after Oct. 26, 2018, requesting that the AUC approve this NID.

The AESO has posted the Notification of NID filing on its website. Please [click here](#) to view the document, or visit the AESO website at www.aeso.ca and follow the path Grid > Project > Wheatland Wind Project Connection to see all the relevant documents, including the NID application once it is filed with the AUC.