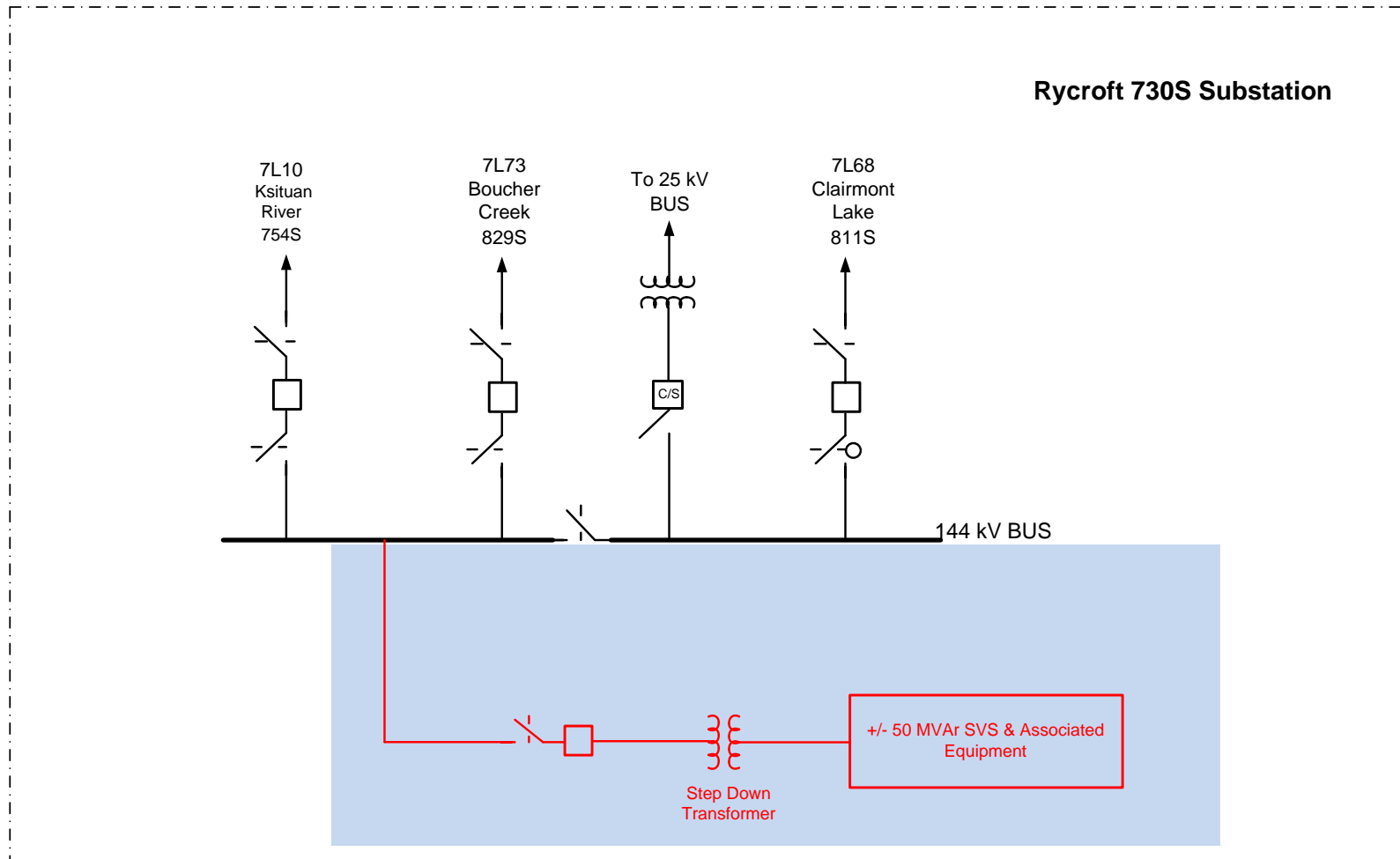


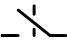
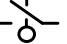



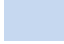
APPENDIX F SINGLE LINE DIAGRAM OF RYCROFT 730S SUBSTATION

Rycroft 730S Substation



Legend

-  Circuit Breaker
-  Circuit Switcher
-  Manual Operated Disconnect Switch
-  Motor Operated Disconnect Switch

-  Line of Demarcation
-  Proposed development

Notes

This simplified single line diagram provides an illustration of a functional arrangement that would meet the need of the proposed project. The exact configuration of the project and the location of the proposed SVS will be determined in ATCO Electric's Facility Application.



The Simplified Single Line Diagram of the Proposed Voltage Support Device in Rycroft 730S Substation

1784-SLD