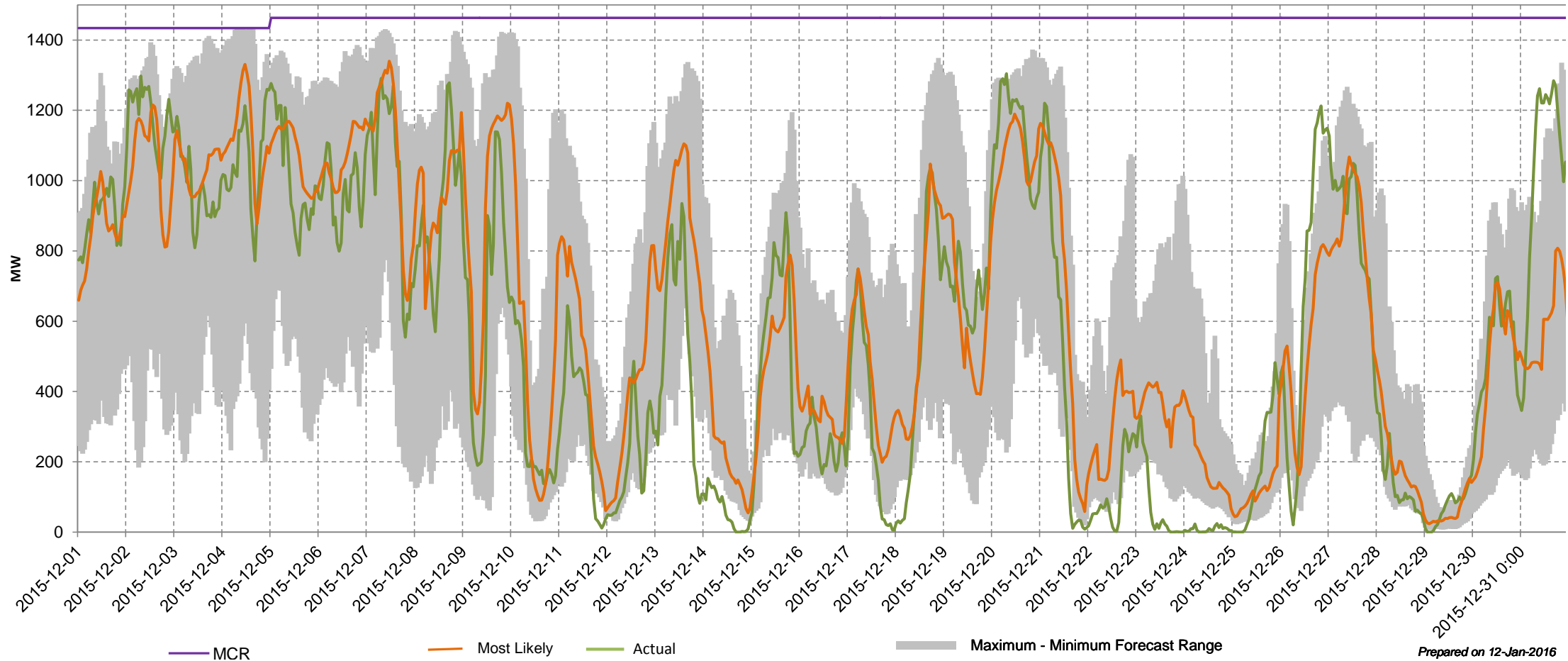


Day Ahead Wind Power Forecast vs. Actual Wind Production for the Month of December 2015



This figure is intended to illustrate the correlation between the wind power forecast received from WEPROG and actual wind production.

Accuracy Statistics: Mean absolute percent error (MAPE) = 11.0%
Average range between the maximum and minimum forecast = 678 MW



Prepared on 12-Jan-2016

