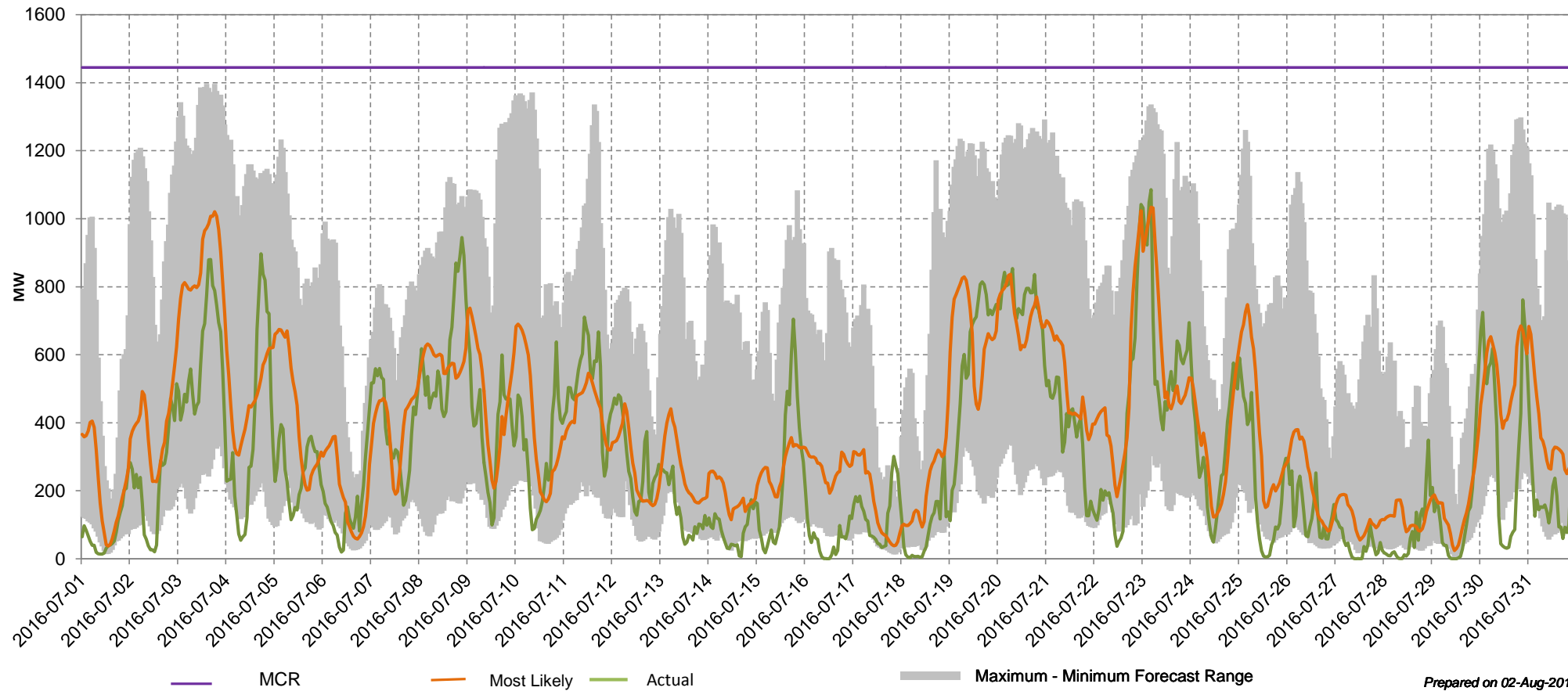


# Day Ahead Wind Power Forecast vs. Actual Wind Production for the Month of July 2016



This figure is intended to illustrate the correlation between the wind power forecast received from WEPROG and actual wind production.

**Accuracy Statistics:** Mean absolute percent error (MAPE) = 10.1%  
Average range between the maximum and minimum forecast = 709 MW



Prepared on 02-Aug-2016