



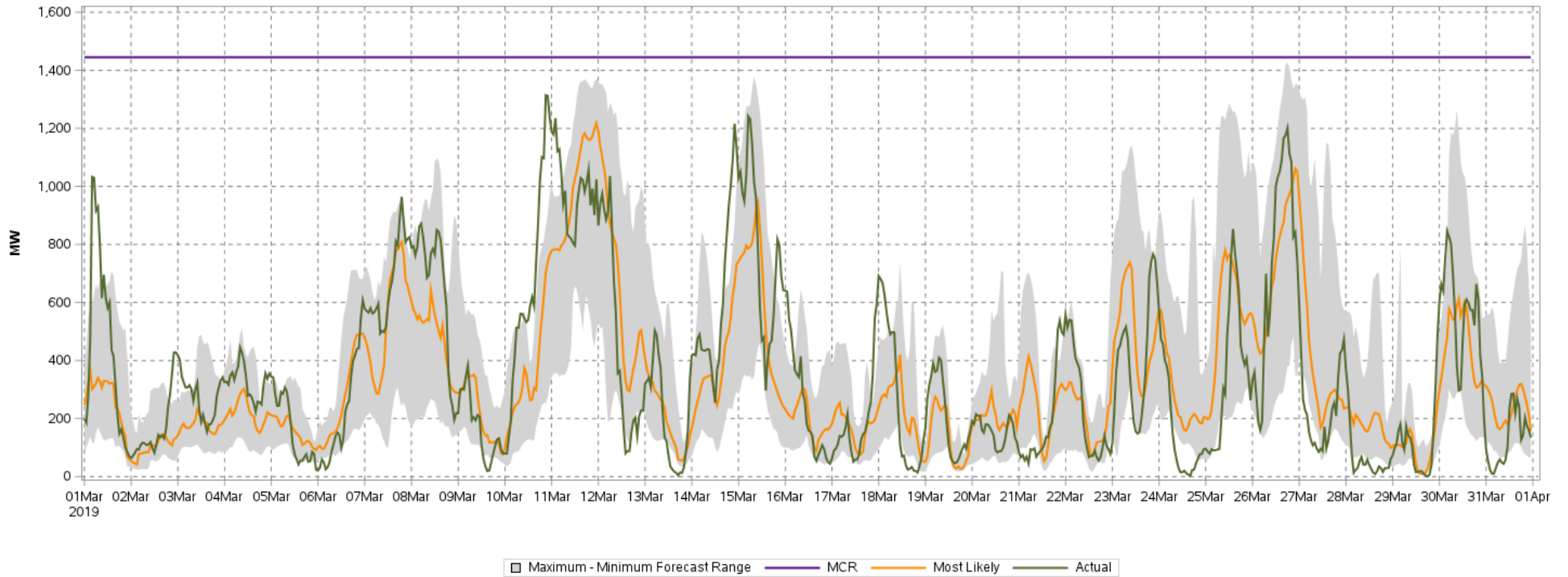
### Day Ahead Wind Power Forecast vs. Actual Wind Production for the Month of Mar 2019

This figure is intended to illustrate the correlation between the wind power forecast received from WEPROG and actual wind production.

**Accuracy Statistics:**

Mean absolute percent error (MAPE) = 10.1%

Average range between the maximum and minimum forecast = 476 MW



Prepared on on April 03, 2019