



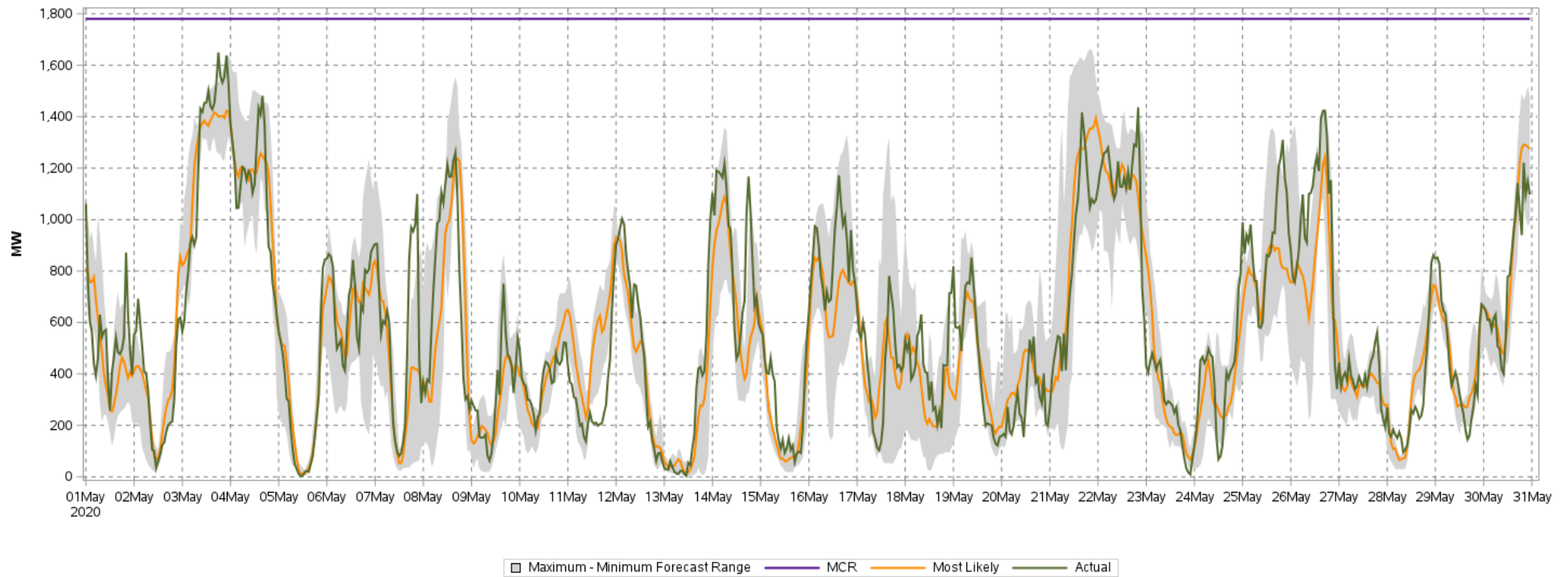
Day Ahead Wind Power Forecast vs. Actual Wind Production for the Month of May 2020

This figure is intended to illustrate the correlation between the wind power forecast received from WEPROG and actual wind production.

Accuracy Statistics:

Mean absolute percent error (MAPE) = 6.4%

Average range between the maximum and minimum forecast = 379 MW



Prepared on on June 05, 2020